

SEDLESCOMBE PARISH COUNCIL ANNUAL REPORT & DIRECTORY 2013

Revised in celebration of the Queen's Diamond Jubilee 2012

Welcome to Sedlescombe

Twenty-first century Sedlescombe is a lively village with a thriving primary school, a village hall, sports grounds, churches and a variety of local voluntary organisations and societies. A selection of interesting businesses are centred in the village.

Sedlescombe's past industries include iron-working, charcoal burning, gunpowder manufacture, leather production and farming.

Sedlescombe has a wealth of public rights of way marked on the map by dashed lines.

Sedlescombe Village

Nearby attractions include Battle Abbey, 3 miles and Bodiam Castle, 7 miles. Visits can easily be made to historic Rye, 12 miles and the seaside town of Hastings, 7 miles.

Key

- ⊙ Iron-works
- ⊙ Gunpowder
- ⊙ Post office and shop
- ⊙ Primary school
- ⊙ Church
- ⊙ Village hall
- ⊙ Car park and taxi

Traveltime 0871 200 22 33

New information board in the Brede Lane Car Park in commemoration of the Queen's Diamond Jubilee

TO LOCAL GOVERNMENT ELECTORS OF SEDLESCOMBE

**YOU ARE INVITED TO ATTEND THE ANNUAL SEDLESCOMBE PARISH MEETING TO BE HELD
IN SEDLESCOMBE VILLAGE HALL ON TUESDAY 30 APRIL 2013 - DOORS OPEN AT 6.30PM
WITH THE BUSINESS MEETING STARTING AT 7PM**

From 6.30pm, you will have an opportunity to look at the tables displayed by local businesses and organisation. There will also be a surprise - come along and enjoy.

1. Chairman's opening remarks.
2. Approval of Minutes of the Annual Parish Meeting held on 17/04/12.
3. Short report from the following:
 - o Sedlescombe School
 - o Pestalozzi International Village
 - o Any other representative of a Village organisation who has asked to speak
4. Report of Parish Council Chairman.
5. Parish Council Financial Report.
6. Electors' question and answer session with panel of District Councillor Tony Ganly, County Councillor Peter Jones CBE, PCSO Demetrius Georghiou and Cllr Jonathan Vine-Hall.

Signed J Vine-Hall Chairman of the Parish Council

At the end of the business part of the meeting, during the serving of light refreshments, those attending are invited to circulate around the hall to meet Parish Councillors, District and County Councillors, our PCSO and local organisations and businesses.

THERE WILL ALSO BE A FREE PRIZE DRAW WITH GOOD PRIZES FOR THOSE ATTENDING THE MEETING and A SPECIAL PRIZE DRAW FOR ANYONE WHO HAS DONE VOLUNTARY WORK FOR THE PARISH COUNCIL OVER THE LAST YEAR.



At last year's Annual Parish Meeting, Pauline Raymond, Parish Clerk, presented Valerie Wright with a *Mark Fisher* woodland painting to mark Valerie's retirement from the Council and thirteen years as its Chairman.

PARISH COUNCIL CHAIRMAN'S INTRODUCTION



Our Parish is amongst the most beautiful in the district. The reason it retains its character and appearance is largely due to the work of many volunteers who do a significant amount of work around the Parish for no remuneration. Apart from saving each Council Taxpayer a considerable amount of money each year the work done keeps our Parish in good condition for the present and the future.

**Thank you to everyone who contributes to keeping
our Parish beautiful and a vital place to live.**

There are many jobs large and small in the Parish ranging from delivering our quarterly newsletter to helping on basic maintenance in the village or on our excellent footpath network. I would ask anyone who wants to get involved in any way to make contact with our Clerk or any one of the councillors.

**Helping around the Parish is highly rewarding
Please Get Involved!**

In September last year we saw the start of the real threat of a large development on a green field site attached to the village which is an ongoing serious concern. To address this the Parish Council in consultation with our community will be creating our own Neighbourhood Plan which will allow residents to say where and what scale of development can take place in our Parish. See pages 32-33 for further information.

**It will be your plan for your Parish. So when the time comes.
Please Get Involved!**

Our lives are more than ever dependent on the internet. Sedlescombe was one of the first rural communities to get broadband a few years ago. We want to be the first rural community to get superfast broadband so we are able to keep pace with cities and towns. Many of our residents have already registered for Superfast Broadband. It costs nothing to register and there is no future commitment attached to registering. It's really important for as many residents as possible to register. Please don't leave it to someone else. This may affect the value of your property in the future. See also page 32.

Register through the Superfast Broadband www.goesussex.co.uk/ webpage.

**It will take no more than 3 minutes to do.
Please don't leave it for others.**

Lastly, welcome to the 79 new householders who have moved into Sedlescombe in the last year. New families add a vibrancy to our Parish.

Cllr Jonathan Vine-Hall, Chairman of Sedlescombe Parish Council, February 2013

MINUTES OF THE ANNUAL ASSEMBLY OF THE PARISH MEETING OF SEDLESCOMBE HELD ON TUESDAY 17 APRIL 2012 IN SEDLESCOMBE VILLAGE HALL, 1930 TO 2045

Total present: 110 persons including: Cllr Valerie Wright (Chairman of Sedlescombe Parish Council) in the chair; Parish Councillors Roy Chapman, Rod Eldridge, Pauline Glew, Julian Heap, Pat Martin, Jenny Mitchell, John Reynolds; Pauline Raymond (Clerk/Responsible Financial Officer of Sedlescombe Parish Council); County Councillor Peter Jones; District Councillor Tony Ganly

Before the meeting started, Pauline Raymond made a presentation of a painting and flowers to Mrs Valerie Wright who was retiring from the Council after the meeting. She had been a parish councillor for 17 years, 13 of them as its Chairman. There was a display of photos in the Hall of Valerie, Pat Martin and Anthony Rand during their time on the Council.

1 CHAIRMAN'S OPENING REMARKS. After welcoming those present, Cllr Wright gave the usual health and safety information and then thanked the following:

- Volunteers who have delivered Bulletins and the Annual Reports on behalf of the Parish Council. More volunteers are always welcome.
- Editors of the Sedlescombe News and Judy Torrance who is responsible for the Battle Observer Village Voice.
- Lift Scheme drivers.
- Neighbourhood Watch Co-ordinators.
- Youth Club volunteers.
- Library ladies.
- Volunteers who work to keep the Churchyard tidy.
- Sedlescombe Parish Church PCC who coped in the Interregnum. Welcome to Kevin Mepham.
- Mark Winchester of Blackbrooks Garden Centre.
- John Bartholomew for volunteering to do jobs around the Village.
- John and Jenny Mainwood at the shop.
- PCSO Demetrius Georghiou for his assistance in the Village. There will be a Road Safety Week at the School from 30/04/12.
- Sylvia Beaney, Margaret Hudson and Rosemary Farley for providing the refreshments.

She acknowledged the work that Anthony Rand had done before his retirement from the Council just before Christmas, particularly as her Vice-Chairman. In addition, she thanked Pat Martin for all of his work during nearly thirty years on the Council including as Chairman of the Planning Committee and as Tree Warden. The Fruiting Hedgerow at Red Barn Field was mentioned and the serious new pest - the Asian Longhorn Beetle - that is threatening trees in the south east. A paper had been left on seats in the hall describing the Beetle and how any discoveries should be reported. Cllr Wright made a presentation to Cllr Martin who was also retiring after the meeting.

2012 PARISH ASSEMBLY MINUTES

Display tables had been set up around the hall by:

- Kester House Bed and Breakfast and Sunday Afternoon Teas. They had brought scones with them.
- Sedlescombe Societies Association which is running a Fayre on the Village Green on 28/04/12. They have raffle tickets for sale. Notice was also given of a Sports Association Dinner at the Brickwall.
- Battle Lions which raise funds for charities.
- Dave Brabants and the Utilities Warehouse where money can be saved on utility bills.
- Sedlescombe Branch of the Royal British Legion and their donation towards the purchase of a TV for Maze House in Bexhill.
- Sedlescombe Garden Society which has a several events coming up.
- Pestalozzi International Village. The Chief Executive, Sue Walton is working hard to raise money for the charity without causing noisy disturbance to the Village.
- Sedlescombe Green WI.
- Richard Jordan Plumbing & Heating with a display of old tools.
- Sedlescombe School with good Ofsted reports and outstanding Church inspection reports. Helpers are always needed in the School and residents are welcome to contact the headteacher.

Cllr Wright also mentioned:

- The new landlords at the Queen's Head.
- Kimberley Glen who is looking for money to go to Kenya with African Adventures.
- The Heathfield Show that needs stewards and will make a donation to their club or organisation if people volunteer.
- The East Sussex Disabled Association which is a charity arranging monthly drives and lunches in Westfield and Sedlescombe. It is hoped that more people can be found to join in through the Friendship Club.
- Community Festival at Battle where they would like a couple of young people to join the procession to represent Sedlescombe or a Village float.
- Queen's Jubilee Big Lunch where everyone is being encouraged to join in lunches with friends and neighbours on Sunday 03/06/12 in celebration of the Jubilee.

2 MINUTES OF THE ANNUAL ASSEMBLY OF THE PARISH MEETING OF SEDLESCOMBE HELD ON 26/04/11. The Minutes which were part of the Parish Council's Annual Report 2012 and Directory had been delivered to each household in the Village. It was moved by Sally Brown, seconded by Sally Martin and **RESOLVED:** That the Minutes of the Annual Assembly of the Parish Meeting of Sedlescombe held on 26/04/11 are approved.

3 REPORT BY COUNTY COUNCILLOR PETER JONES. Cllr Jones began by congratulating Valerie Wright on her long chairmanship of Sedlescombe Parish Council and Pat Martin for his quiet support. He went on to thank Pauline Raymond for her work as Clerk.

2012 PARISH ASSEMBLY MINUTES

Papers summarising the County Council's achievements in 2011-12 and a 2012-13 Budget Briefing were on the chairs. Cllr Jones explained how the County Council had been able to deal with the challenging current financial situation so that most people will not see any reduction in services. Expenditure on roads, libraries and schools will continue. The recently-approved link road is expected to bring new jobs as well as homes to North Bexhill to the benefit of the local economy. Money has been set aside to add to the amount expected from Government to roll out superfast broadband across the county.

4 REPORT BY DISTRICT COUNCILLOR TONY GANLY. Cllr Ganly added his thanks to the Parish Council and particularly to Valerie Wright and Pat Martin on their retirement. A printed Rother District Council annual report for 2011-12 was on the chairs. Cllr Ganly gave details of his expenses during the year. He has been Chairman of the Joint Committee for the new Waste Contract and he gave information about what could be expected. Of particular note is the increased number of items that will be collected from the kerbside (11) and the possible introduction of charges for green waste collection. The new scheme should be launched in 2014 in the Rother District but before then in 2013 in Eastbourne.

5 SEDLESCOMBE PARISH COUNCIL REPORT. The Council's Report had been delivered to every household in the parish of Sedlescombe. Cllr Wright provided an update as follows:

- A lottery application for a contribution towards a £54,000 project to upgrade the courts, provide a children's football pitch and some outdoor gym equipment has recently been submitted to Sport England under their Inspired Facilities, Olympic Legacy Fund by the Public Playing Field & Recreation Ground charity. The result will be announced in early July. Donations and funds are being collected now. The next meeting to discuss this project with neighbours and users is on Monday 14 May at 19:00 in Committee Room 2 of the Village Hall.
- The Parish Council has been backing a local campaign to bring Superfast Broadband to Sedlescombe sooner rather than later. Lots of Sedlescombe people have logged on to the Rural Broadband Partnership website to register their interests. There is still time to add names.
- The Parish Council expects to meet with Rother Planners in May to discuss site allocations for development in the Parish as part of the Local Development Plan Core Strategy.

6 ANY OTHER BUSINESS - QUESTIONS. The Chairman invited questions to the three local authorities represented on the stage. The following were asked and answered as appropriate:

- Planning application to demolish garages and to build eight new properties. The Parish Council was informed by a garage tenant that Amicus Horizon has received £10,000 a year in rents for the garages but has not spend any money on their repair. Rents of the garages have been raised this year. Cllr Wright reminded the meeting

2012 PARISH ASSEMBLY MINUTES

- that the Parish Council can only object to applications on planning grounds. A letter had been received by the Council before the meeting. Objectors were told to raise their concerns with the Council at the relevant Planning Committee meeting (next date is 08/05/12 at the end of the Council Meeting) and to inform Cllr Ganly.
- Problem with parking at East View Terrace. Suggestion by resident that the verge is removed to give extra parking on the lower part of the Estate.
- Suggestion from resident that the Parish Council should consider buying the ex-car lot in The Street to help with parking problems and to provide a better site for the recycling bins. Cllr Wright suggested that having the bins in the Brede Lane car park was convenient for people to access on foot.
- As an alternative, Derek Wright said that if the Parish Council does not want to buy the ex-car lot, it might be possible to set up a community interest company for this purpose. Those interested were asked to contact him at his table or at Kester House.
- Demi spoke about how he was addressing the parking problems in Brede Lane including the issuing of tickets. He also mentioned road tax enforcement and the speed checks he carries out at 06:00.
- Suggestion from resident that grass reinforcement could be used on the verges in Brede Lane to provide additional parking areas without losing the grass. She was asked to contact County Councillor Jones.
- The Headteacher explained that it is difficult to get the commitment from parents regarding walking buses and that the number of children involved has dropped. She also suggested that even when the School is closed, there is quite a bit of parking in Brede Lane. County Councillor Jones spoke of the need for families bring children to the School from outside the Village to co-operate with the walking buses. The Highways Department/Sussex Police must find a way to sort this out.
- A resident from Streetlands spoke of the distress caused to those living in that road as it is used for School parking and parents do not care if their children walk over the gardens.

CLOSURE. The Chairman closed the meeting by thanking councillors for their hard work for the Village. She also thanked the clerk for her help during the years of her chairmanship.

To be signed by the Chairman at the meeting on 30/04/13.

KNOW YOUR COUNCILLORS AND CLERK



JONATHAN VINE-HALL, 07973 129505, CHAIRMAN. Jonathan has lived in Sedlescombe since 2003 and farms Hurst Estate between Brede Lane and Cripps Corner. He is an ex-officio member of every council committee and is actively involved in a number of activities including monitoring and maintaining our footpath network and general maintenance around the village. He competes in Western Riding and represented the UK at the World Show in November 2012 in the US. He is also a trustee for Raystede Centre for Animal Welfare and has four rescue dogs and two rescue horses.



PAULINE GLEW, 01424 870258, VICE-CHAIRMAN, Chairman of Finance Committee and ex-officio member of each Council Committee. Pauline joined the Council in 2003. She is the Council's Village Hall Trustee, oversees the working of the Sedlescombe Lift Scheme and is one of the Council's two representatives on the Rother Association of Local Councils. She also represents the Council on and is Treasurer of Sedlescombe Neighbourhood Watch, is a member of the Rother Transport Action Group and is on the Sedlescombe Friendship Club Committee.



JOHN REYNOLDS, 01424 870956, Chairman of the Planning Committee and member of the Emergency and Core Strategy Advisory Committees. John was elected to the Council in May 2011. When he first came to Sedlescombe in 2004, John built himself and family a new house in Hurst Lane. He has been involved in work for Great Ormond Street Hospital via his involvement with the Masonic lodges and supports several other charities. He is passionate about the countryside and its well being and likes walking, fishing and gardening.



JOHN PARSONS, 01580 831996, Member of the Planning Committee and Parking & Traffic Advisory Committee. John moved to the most northerly part of the Parish in 2006 and was co-opted to the Council in July 2012. He is one of the Council's two representatives on the Rother Association of Local Councils. Since his retirement from a national construction company in 2008 he has become more involved with the village and is the current Chairman of Sedlescombe & District Garden Society. He also represents them on the Village Hall and Sedlescombe Societies Association (SSA) committees. Outside of village life, John enjoys attending and compiling quizzes, music of all kinds, genealogy and cooking.

SIMON LAWRENCE was co-opted to the Council on 18/02/13.



JENNY MITCHELL, 01424 870707, Chairman of Sedlescombe Playing Field & Recreation Ground Trust, a member of the Planning Committee and the Emergency and Core Strategy Advisory Committees. After a short break, Jenny re-joined the Council in 2007. Outside Council work, Jenny is Treasurer of Sedlescombe Green WI, Booking Clerk for the Village Hall and, twice a week, works voluntarily in the Demelza Hospice shop in Battle.



ROY CHAPMAN, 01424 870520. Member of Planning and Finance Committees and of the Parking & Traffic and Emergency Advisory Committees. Roy was elected to the Council in May 2011. He has lived in and been associated with Sedlescombe and its surrounding areas for more than 40 years and ran his own building business here. He is a member of Battle & Villages Lions Club and is on the Committee of the Sedlescombe & District Garden Society. His interests include photography, the arts and conservation.



ROD ELDRIDGE, 01424 870983. Chairman of the Parking & Traffic Advisory Group and member of the Finance Committee. Co-opted onto the Parish Council in January 2012. Retired and previously worked for over 40 years in local government within Town Planning/Building Control. He is a committee member of Sedlescombe Garden Society with responsibility for organising trips for groups. He has a large garden as well as a local allotment. President elect of Battle and Villages Lions Club and a local magistrate.



PETER ANSON, 01424 870862. Member of Finance Committee. Co-opted in 2012 Peter is a Chartered Surveyor who recently retired after almost 50 years in the property business specialising in property investment, development and planning. He has lived in Sedlescombe for 15 years and is Chairman of the Restholme Trust and a Managing Trustee of The Revd. George Barnsley Trust. Peter enjoys gardening, fishing, cricket watching and entertaining grandchildren, the latter for limited periods!



PAULINE RAYMOND, PARISH CLERK & RESPONSIBLE FINANCIAL OFFICER, 01424 870508. Pauline is the Council's only employee and has worked for it since 1975 being only its 5th Clerk since 1894. Pauline is interested in Sedlescombe's history, has a wide collection of photographs of the Village dating back to before 1900 and maintains the Council's Archive Collection. She welcomes more to add to the collection. Pauline's other interests include wildlife watching and photography around the world and her four small grandchildren.

SEDLSCOMBE PARISH COUNCIL BRIEF FINANCIAL REPORT

Most of the Council's expenditure in 2012/13 has been normal day to day maintenance costs. The exceptions are replacement and upgrading of some of the Council's equipment and software and the first part of the MUGA (multi-use games area) scheme at the tennis courts which will cost £28,000 plus VAT overall. In 2013/14, the project is expected to be completed with the laying of a new surface. Even in these desperately difficult financial times, various grants have been obtained to cover the cost of most of this work leaving the Parish Council to take out a £9,000 loan to meet the shortfall. Fortunately, interest rates are currently very low and the rate on the loan is 1.91%. Repayments will cost almost £1,000/year over the next ten years. Once the MUGA is complete, about £1,500 will also need to be put aside each year towards the next resurfacing in about 10-12 years time and £400 for various maintenance.

To celebrate the Queen's Diamond Jubilee, the Parish Council refurbished the "Welcome to Sedlescombe" board in the car park and gave £200 to Sedlescombe Green WI to help with the costs arising from the Village Jubilee Picnic for all at the Sportsfield. The design of the board by Angel Design of Tackleway, Hastings, is shown on the front cover of this report. The only other grant was a small one of £150 made to support fuel costs of the Battle Area Community Bus in recognition of the valuable contribution the bus makes to the lives of Sedlescombe's elderly residents.

Due to changes introduced by the Government in the way Housing benefit is paid, the part of Band D Council Tax relating to the Parish Council would have increased even if the 2013-14 precept remained the same as last year. The Council has agreed a further increase to cover the cost of the first part of a Neighbourhood Plan. Attempts will be made to obtain grant aid.

It is well worth noting that, although the Council Tax has increased, the Parish Council has been able to introduce changes to the grounds maintenance contract to arrange a volunteer assistance scheme to get some of the jobs done. If this work had been done by contractors, based on this year's estimates, it could have cost the Council almost £5,000 extra. Thank you to those who have volunteered.

Pauline J Raymond
Responsible Financial Officer
February 2013

PARISH COUNCIL ACCOUNTS

FINANCIAL STATEMENT FOR THREE YEARS 2011-12, 2012-13 & BUDGET 2013-14

	Final 2011-12	Estimated 2012-13	Budget 2013-14
	£	£	£
BROUGHT FORWARD	£48,731.18	£47,707	£58,151
INCOME			
Precept	31,500.00	33,500	41,000
Other income	4,351.92	19,678	9,790
Total income for the year	35,851.92	53,178	50,790
EXPENDITURE			
Staff costs	-14,693.16	-14,640	-14,777
Loan repayments	-4,643.24	-4,644	-5,638
Total other costs	-17,539.45	-23,450	-41,948
Total expenditure for the year	-36,875.85	-42,734	-62,363
BALANCES AT YEAR END	£47,707.25	£58,151	£46,578
Represented by			
General funds	12,000.46	15,511	15,238
Sportsfield Fund	361.29	0	0
Pump Project Fund	8.05	0	0
MUGA Fund	0	7,300	0
Access Funds	4,000.00	4,000	0
Clerk's Gratuity Fund	31,337.45	31,340	31,340
Balances in Funds	£47,707.25	£58,151	£46,578
Council Tax base	661.59	676.34	606.37
Band D Council Tax	£47.61	£49.53	£67.62
ASSETS based on historic values	£292,326	£291,524	£291,524
BORROWINGS - amount outstanding	£44,261	£41,298	£38,219
Pavilion at 3.86% fixed rate			

NB Repayments on the £9,000 loan for the MUGA commence on 25/04/13

SEDLSCOMBE PARISH COUNCIL - PROVISION OF SERVICES AND AMENITIES - CONTACT:

Mrs Pauline J Raymond (Parish Clerk) 01424 870508

RIVERSIDE PLAYGROUND AND MULTI-USE GAMES AREA. This area is managed by the Parish Council on behalf of the Sedlescombe Public Playing Field and Recreation Ground Trust. The playground with a range of modern play equipment is suitable for children of 12 and under. The former tennis courts will become a multi-use games area (MUGA) in spring 2013. Any sports can be played on the MUGA and general public use will remain free. Group bookings or commercial use should be booked through the Parish Clerk. Please note there is no parking on the site - please park in the road or in the public car park in Brede Lane which is in easy walking distance. Toilets also in the car park.

EAST VIEW TERRACE KICKABOUT AREA. The Parish Council is the freeholder of a small hard-surfaced area at East View Terrace. There are two storm shooter football goals and two basketball hoops.

Please note that the small play area on the East View Estate is provided and managed by Orbit Housing Association.

RED BARN FIELD NATURE PARK. The Parish Council is the freeholder of a small nature park at the rear of Sedlescombe Village Hall. It is maintained for the benefit of wildlife and to provide easy access to the hall from the Balcombe Green end of the Village. In 2011, a fruiting hedgerow was planted under the Hedgerow Harvest Tree Council Scheme on the Field's boundary with the Village Hall Car Park.

SEDLSCOMBE VILLAGE GREEN. The Parish Council is the registered owner of the Village Green and is responsible for its maintenance including the Pumphouse. Byelaws have been adopted for the management of the land. Anyone wanting to use the Village Green for any purpose, even to put a notice on it, MUST contact the Parish Clerk beforehand. Unauthorised signs will be removed.

SEDLSCOMBE PARISH COUNCIL WEBSITE. The Parish Clerk maintains the Council's interesting and up-to-date website. It can be seen at www.sedlescombe.org.uk.

LIFT SCHEME. An informal scheme is arranged by the Parish Council to help Sedlescombe residents without transport to attend hospital or surgery appointments. A list of drivers who are willing to provide lifts is published on the board outside the shop and those wanting lifts simply make a phone call to any one on the list and pay the driver. Cllr Pauline Glew or the Parish Clerk will be please to hear from anyone who would like to become a Lift Scheme driver.

DOG BINS AND LITTER BINS. 3 dog bins are provided and emptied weekly by the Parish Council. Please respect these and the litter bins and do not place dog waste or household waste in litter bins. The Parish Council also publishes a dog leaflet.

Advertisers in the 2013 Sedlescombe Directory

The Parish Council is grateful to the advertisers whose contribution has enabled the 2013 Sedlescombe Parish Council Annual Report to be provided free of charge to each household in the parish of Sedlescombe. The inclusion of traders in this Directory neither implies nor confirms that any trader is an approved supplier or contributor to Sedlescombe Parish Council. The Council cannot vouch for the financial stability of any company or for its health and safety procedures. All information is provided in good faith to assist consumers in exercising their own best judgment. However, no guarantee is given or implied as to the accuracy of the information provided.

Pumphouse Designs

Angel Belle Beauty

Kester House bed and breakfast

BEM Builders & Decorators

Chalk Down Lime Builders Merchant

Tivoli Auto Services

LWA Bodyshop Limited

Penny Sivers Childcare

Andrea Birtwistle Chiropody

Parker & Son Construction

John Grice Decking/Fencing

John Grice Double Glazing

Ecoflo Irrigation Ltd drainage

D&B Fencing

Martin Garner Foot Health

Sedlescombe Golf Resort

Brickwall Hotel

Bridge Garage Workshop

Pestalozzi Meeting and Training facilities

Hugh Davidson - Music

Richard Jordan Limited Plumbing & Heating

Graham Daniel Limited Plumbing & Heating

Rand Reclamation

Sedlescombe Village Stores Limited

Antiques & Collectables Market

Mrs J Chapman Signwriter and author

Frenchs Skip & Grab Hire

Sedlescombe Hire Car

EchoWood Tree Services

Andrea Hanagarth Yoga



ARCHITECTURAL	BEAUTY THERAPIST
 <p>PumpHouse DESIGNS Architectural Consultants</p> <p>Plans and Local Authority Applications for ~Extensions ~ Alterations~ ~Loft Conversions ~ Garage Conversions~ ~Barn Conversions ~ New Build~</p> <p>Contact us for your FREE no obligation consultation and quotation</p> <p>01424 871120 www.pumphousedesigns.co.uk Pump House Yard, The Green, Sedlescombe</p>	<p>ANGEL BELLE BEAUTY Qualified beauty therapist At Woodside Bed and Breakfast, Cripps Corner</p> <p>Manicure, Pedicure, Tinting, Waxing, Facial, Makeup, Spray Tan, Acrylic Nails, Lashes. Competitive pricing!</p> <p>www.woodsidebandb.com info@angelbelle.co.uk 0785 407 6163</p>
BED & BREAKFAST	BUILDERS & DECORATORS
 <p>Kester House Bed & Breakfast www.kesterhouse.co.uk</p> <p>The Street, Sedlescombe 01424 870035</p> <p>Luxurious Old World Charm</p>	<p>BEM BUILDERS & DECORATORS LTD (Federation of Master Builders) Contractor for refurbishment of Sedlescombe Pumphouse in 2010</p> <p>General building, Extensions, Conversions, UPVC Cladding, roofing, Disabled adaptations, Concrete repairs, Decoration</p> <p>T: 01424 434304 M: 07885 117970 E: james@bembuilders.co.uk www.bembuilders.co.uk</p>
BUILDERS MERCHANTS	CAR REPAIRS/GARAGE SERVICES
<p>Finest Lime Products - Made in Sussex since 1996</p> <p>CHALK DOWN LIME LTD. TRADITIONAL & ECO BUILDING MATERIALS</p> <p>BULK BAGS @ £33.33 + VAT 25kg BAGS @ £1.50 + VAT</p> <p>BUILDING / SHARP / PLASTERING SAND BALLAST, SHINGLE, PEABEACH, TYPE I</p> <p>CONSERVATION - RESTORATION - NEW BUILD - DIY MORTAR - PLASTER - NHL - CEMENT - LIME - PAINTS - TOOLS</p> <p>THE LIME YARD, GATE FARM, STAPLECROSS, EAST SUSSEX, TN32 5RP T: 01580 830 092 F: 01580 830 096 WWW.CHALKDOWNLIME.CO.UK</p>	<p>TIVOLI AUTO SERVICES 100 Battle Road, St Leonards-on-Sea TN37 7AG T: 01424 442277 E: info@tivoliautoservices.co.uk www.tivoliautoservices.co.uk</p> <p>Motor car repairs: MOT: Servicing: Sales: Air Con Specialist: Free Loan Car: Free Collection & Delivery: On-site Bodyshop & Professional Valet Service</p> <p>Estimates and Insurance Work undertaken</p>

CAR REPAIRS	CHILD CARE
 <p>LWA BODYSHOP LIMITED</p> <p>Accident repair with Paintless dent removal Vehicle Restoration & Insurance Approved</p> <p>Bridge Garage The Street, Sedlescombe TN33 0QB David Barnes T: 01424 870488 - M: 07967 838591</p> <p>david@lwabodyshop.eclipse.co.uk</p>	<p>P.J. Childminding Services</p> <ul style="list-style-type: none"> • O.F.S.T.E.D. registered • Qualified First Aider • Qualified N.V.Q. Level 3 <p>Mon-Thurs from 8am to 4.30pm (5pm at latest), term time only - £4.50 per hour 5 mins from Staplecross, 10 mins from Northiam & Sedlescombe. Make an appointment, come and have a look Mrs Penny Sivers - 01580 831265 - anytime</p>
CHIROPODY	CONSTRUCTION/BUILDERS
<p>HCPC Registered</p> <p>HOME VISITING SERVICE</p>  <p>Andrea Birtwistle DPodM MChs</p> <p>T: 01424 870012 M: 07931 974486</p>	  <p>BUILDING THE FUTURE RESTORING THE PAST</p> <p>From Design To Completion We Deal With Everything From Planning & Architectural Drawings To Completing Your Project</p> <ul style="list-style-type: none"> • New Builds • Extensions • Conversions • Landscaping • Conservatories • All General Building Works  <p>01424870284 07803258527</p> <p>www.parkerandsonconstruction.co.uk</p>
DECKING/FENCING	DOUBLE GLAZING
 <p>Conservatories Fascia • Soffits • Fencing Decking & Handyman Services</p> <p>TELEPHONE SEDLESCOMBE 01424 870137 • 07717 573185</p>	 <p>Installer of quality UPVC Windows Doors • Porches • Conservatories Fascia • Soffit</p> <p>20 Years Experience • 10 Year Guarantee</p> <p>TELEPHONE SEDLESCOMBE WINDOWS 01424 870137 • 07717 573185 john.grice888@btinternet.com</p>

DRAINAGE	FENCING
<p>ECOFLO GARDEN IRRIGATION LTD SPECIALISE IN Recycling solutions to Septic Tank, Treatment Plant Soakaway issues. Reducing escalating cesspit costs. Septic Tank Maintenance Surface Water Issues T: 01424 871081 or M: 07840 172432 www.ecoflo-irrigation.co.uk Stream Farm, Stream Lane, Sedlescombe</p>	<p>D&B FENCING</p>  <p>All types of fencing, gates, decking and pergolas supplied and installed Free estimates Friendly advice T: 01580 831800, 01424 870484 Sedlescombe Sawmills, Cripps Corner E: fencingbydandb@hotmail.co.uk</p>
FOOT HEALTH CARE	GOLF RESORT
<p><i>British Association of Foot Health Professionals</i></p> <p>GENTLE FOOT CARE Home visits</p> <p>Martin Garner MCFHP MAFHP Registered Practitioner</p> <p>TEL: 01424 871195 Mob: 07962 143078</p>	<p>GOLF COMPLEX</p> <p>18 Hole Parkland Course - Par 3 Course Floodlit driving range 20 Bedroom Accommodation Bar & Restaurant Conference Facilities Sedlescombe Golf Club, Kent Street, Sedlescombe TN33 0SG T: 01424 871700, F: 01424 871712 E: golf@golfschool.co.uk www.sedlescombegolfclub.co.uk www.golfschool.co.uk</p>
HOTEL & RESTAURANT	MECHANIC WORKSHOP - BRIDGE GARAGE
<p>BRICKWALL HOTEL</p> <p>The Green, Sedlescombe</p>  <p>T: 01424 870253 F: 01424 870785 E: info@brickwallhotel.com W: www.brickwallhotel.com Hotel and restaurant, parties catered for. Heated outdoor swimming pool open May- September. 45 car parking spaces.</p>	<p>BRIDGE GARAGE WORKSHOP</p> <p>The Street, Sedlescombe T: 01424 870202</p>  <p>General repairs, Tyres and Servicing</p> <p>MOTs and range of car care products</p>

MEETING ROOMS/TRAINING FACILITIES	MUSIC
 <p>Inspiring young people to make a difference in the world</p> <p>Meeting Rooms and Training Facilities Up to 50 delegates Indoor and outdoor spaces Catering available Call Dani to arrange a viewing 01424 871903 www.pestalozzi.org.uk</p>	<p>Not Guilty </p> <p>'The` live music band For parties, weddings, events. Played at Sedlescombe Village Hall. Established with loads of testimonials. 01424 870433 www.notguiltymusic.co.uk</p>
PLUMBING & HEATING	PLUMBING & HEATING
<p>DANIEL HEATING LIMITED All plumbing and heating Installations - Maintenance - Repairs</p> <ul style="list-style-type: none"> • Central heating • Boilers • Bathrooms • Power Showers • Landlord Certificates • Gas Safety Checks <p>T: 01424 870907 - M: 07767 356367 www.danielheating.co.uk</p> 	<p>RICHARD JORDAN LIMITED Plumbing and Heating</p>  <p>Millstones Cottage, The Street, Sedlescombe T: 01424 871165</p> <p>Over 40 years experience</p> <p>Specialist in Bathrooms - complete service All plumbing work</p>
RECLAIMED MATERIALS	SHOP & POST OFFICE
<p>RAND RECLAMATION</p>  <p>M: 07768 846800 T: 01424 870722</p> <p>MANY NUMEROUS RECLAIMED MATERIALS</p> <p>Oak Beams - Old and New Planks, Flooring Tiles, Bricks etc bought and sold</p>	<p>SEDLESCOMBE VILLAGE STORES LTD John & Jenny Mainwood, 01424 870250 www.sedlescombestores.co.uk</p> <p>Award winning Village Shop Groceries, in store bakery, newsagent, off-licence, confectionery, tobacco, cash machine, DVD hire, photocopier, fax & laminating services. Agents for dry-cleaning & laundry, shoe repairs and film processing.</p> <p>Sub Post Office offering banking facilities, Motor Vehicle Licensing, Euros on demand, other currencies and Travellers Cheques to order and all usual Post Office Services</p>

SHOPS	SIGNWRITER & AUTHOR
<p align="center">SEDLSCOMBE ANTIQUES & COLLECTABLES MARKET AT BRIDGE GARAGE</p> <p>Many shops under one roof Good quality stock old and new Furniture, Household, Jewellery, Art, Books, CDs, DVDs & 100s of other attractive and collectable items at bargain prices Furniture restoration, chair caning & made to measure soft furnishings Open 7 days - 01424 871424 A WARM WELCOME EXTENDED TO ALL</p>	<p>Mrs J Chapman, Ashdown Cottage, Cottage Lane, Sedlescombe T: 01424 870520</p> <p align="center">HOUSE NAMES SIGNS ETC</p> <p align="center">AUTHOR OF "LIFE THROUGH THE LENS" <i>A pictorial history of the Village</i> "HOP-SCOTCH & SPINNING TOPS" <i>The history of the old Primary School</i> "THE TIMES OF OUR LIVES" <i>Memories of local people</i></p> <p align="center">From Sedlescombe Stores or phone as above</p>
SKIP & GRAB HIRE	TAXI
<p align="center">FRENCHS</p> <p>Commercial & Domestic Waste Disposal & Recycling</p> <p align="center">Skip Hire Grab load service Or bring your rubbish to us</p> <p align="center">01424 422477 www.frenchskips.com</p> <p>Woodland House, Drury Lane, Ponswood Industrial Estate, St Leonards-on-Sea TN38 9BA</p>	<p align="center">SEDLSCOMBE HIRE CAR</p> <p align="center">Licensed private hire taxi Long and short journeys</p> <p align="center">Established over 20 years</p> <p>Contact: H Hannam T: 01424 870397 or M: 07770 478516</p> 
TREE SURGERY	YOGA CLASSES & PRIVATE TUITION
 <p>City & Guilds qualified & fully insured</p> <p>Tree felling and removal • Crown Lifting Coppicing • Pollarding • Pruning Hedge Trimming • Free Quotes</p> <p>Damian Rigg BSc (Hons) 07887 674 335 // 01424 870 255 echowoodtreeservices@yahoo.co.uk</p>	<p align="center">THE YOGA SCHOOL 825a The Ridge, St. Leonards-on-Sea, TN37 7PX</p> <p>Hatha Yoga, Yin & Restorative classes or private tuition. Courses, workshops, drop-in & book-in classes available. A life enhancing practice for young and old alike - if you can breathe, you can do Yoga!</p> <p>Please contact Andrea Hanagarth to find out more or to book a taster session.</p> <p align="center">T: 01424 870 942 M: 07949 607 865 E: info@theyogaschool.co.uk www.theyogaschool.co.uk</p>



BADMINTON in Village Hall. CONTACT: Shirley Davies 01424 870475

BOWLS - SHORT MAT - established June 2006

WHEN - Meets each Tuesday and Thursday. **TIME:** 2.15-4.30pm

WHERE: Sedlescombe Village Hall (3 bowling mats)

CONTACTS: K Smith 01424 883473, Mr C Clark, Secretary 01424 871441,
Mr C Boyd, Treasurer 01424 870076. Contact any officer for further details
Joining fee £5 + £1.50 each session

ROYAL BRITISH LEGION, SEDLESCOMBE BRANCH - established 1930

WHEN: Meetings on 3rd Wednesday of every month except August **TIME:** 10:30 to 12:00

WHERE: the Queen's Head Public House

CONTACT: President: Mr E Burgess 01424 870219

Chairman: Vice-Chairman: Mr R Wallace 01424 753606

Secretary: Mr John Page 01424 870455

Branch Treasurer: Mrs Eve Bradbury 01424 870401

The Legion looks after the welfare of ex-service men and their dependants. Membership is open to all who wish to support this worthy cause. The Annual Subscription is £15.50 which includes £2.50 to Branch funds. If you would like to become a Poppy Appeal Collector, your help would be most appreciated.

BROWNIES

WHEN: Monday evenings, 5.30-7pm during term time

WHERE: Sedlescombe Village Hall

CONTACT: Andrea Hunnemen 01424 424112

Lots of activities, outings, craft, badge work and HAVING FUN for girls 7-11
New members will be very welcome.

CHAPEL HILL CHURCH (United Reformed)

WHERE: Chapel Hill, Sedlescombe

WHEN: Services on Sundays at 10:30

CONTACT: Doreen Meredith 01424 870634

E-MAIL: bernard@fidder.co.uk - **MINISTER:** Reverend Bernard Fidler

CHAPEL HILL CHURCH HIRE

CONTACT: Doreen Meredith 01424 870634, bernard@fidder.co.uk. The well-heated, comfortable, multifunction chapel, seating 45, and the smaller meeting room are available for use by other village groups, under certain conditions. Includes toilet and basic kitchen, also overhead projector and fixed screen. Please contact the Secretary above for details.

ORGANISATIONS, CLUBS, SOCIETIES & CHARITIES

PARISH CHURCH - ST JOHN THE BAPTIST - Parish Eucharist 10 am Sundays. Andrew Corbett-Nolan 07912 113730 (Churchwarden). **PRIEST IN CHARGE** - Kevin Mepham 01424 870233.

SEDLESCOMBE CHURCH BELLRINGERS - Parish Church, every Wednesday, 7.30pm.
CONTACT: Jane Blanford, Carpenters Barn Farm, Kent Street, Sedlescombe 01424 751298

FRIENDS OF SEDLESCOMBE PARISH CHURCH HERITAGE TRUST. CONTACT: Mrs S J Brown 01580 830813 to become a friend. This charitable trust was established by the late Beryl Lucey for the purpose of assisting in maintenance and restoration of our beautiful 12th century Parish Church and churchyard. It provides a means for anyone in the community to contribute to ensuring the long-term survival of this historic building. Several fund-raising events are organised throughout the year.



SEDLESCOMBE CRICKET CLUB - established 1768

WHEN: Sundays. **TIME:** 2.30pm

WHERE: Sedlescombe Sportsfield for home games

CONTACT: J Carthew, 3 Little Park Farm Cottages, Battle TN33 0LX, 01424 774589

The Club plays its main matches on Sunday afternoons during the season and maintains the traditions of amateur sport by engaging in friendly matches (rather than league matches). It does however play in the local indoor league during the winter months. It welcomes new players. Potential recruits phone Aaron Maynard 01424 430526.



OLD TIME DANCE CLUB established 1949

WHEN: Every Friday throughout the year. **TIME:** 7.30pm to 10:15pm

WHERE: Northiam Village Hall. **CONTACT:** Mr Paul Capps, 16 Lower Waites Lane, Fairlight, TN35 4DB, 01424 812107. **SUBSCRIPTION:** £3.

Emphasis is given to ensuring members enjoy the social atmosphere of Old Time & Modern Sequence dancing to familiar tunes. New members, from the experienced to the novice, are given a warm welcome and established members are always happy to help newcomers to settle in.

SEDLESCOMBE & DISTRICT FLOWER CLUB

WHEN: Every 2nd Wednesday in the month at 7.30pm

WHERE: Sedlescombe Village Hall. **CONTACT:** Sheila Benson, Chairman. Tel: 01797 223927. E: benson.ferryhouse@btinternet.com. Our annual programme consists of several demonstrations of flower arranging, practice meetings, workshops and social events. Visitors are warmly welcomed.

ORGANISATIONS, CLUBS, SOCIETIES & CHARITIES



FISHING - THE HASTINGS FLYFISHERS CLUB LIMITED

CONTACT: Mrs M Stacey - Secretary, T: 01424 439633,
www.hastingsflyfishers.co.uk

SEDLESCOMBE RANGERS FOOTBALL CLUB

Based at Oaklands Park, Sedlescombe, the club provides football for all age groups and currently has sixteen teams from Under 6s (mini-kickers) to Seniors, making us one of the largest clubs in the area.

The senior teams play in the East Sussex Football League and the junior teams play in the Rother, Crowborough or Sussex Sunday Leagues depending on age and ability. Training is provided throughout the year on grass, G3, astro or indoors at several local venues.

All our Junior Team Managers, Coaches and volunteer helpers are FA Enhanced CRB checked, coaches have a minimum of the F.A. Level 1 Coaching Certificate, and each team has at least one certified emergency first aider.

CONTACT: Nick Gardner (Chairman) 07809 562448 or Rod Cornelius (Secretary) 07870 741222 for details or visit our website www.sedlescomberangersfc.co.uk.



SEDLESCOMBE FRIENDSHIP CLUB

The club was founded in 2007 with the aim to advance the welfare of the older people and, in particular, to endeavour to counteract loneliness and isolation. A number of events will be planned each year including visits to interesting places often with lunch. Our programme also includes computer lessons which take place on a Monday. The dates and times of these and other events will be published in the Sedlescombe News and elsewhere that is appropriate.

MEMBERS OF THE COMMITTEE are Valerie Wright, Ron Sunderland, Bill Cameron, Bob Harris, Pauline Glew and Ralph Dellow

SEDLESCOMBE & DISTRICT GARDEN SOCIETY



MEET: Sedlescombe Village Hall

SECRETARY: Sue Parsons, "The Candles", Swailes Green, Cripps Corner TN32 5QU 01580 831996

MEMBERSHIP SECRETARY: Dave Brabants 01424 871436
Noticeboard on Sedlescombe Stores for dates and times of events.

www.sedlescombegardensociety.org.uk/

ORGANISATIONS, CLUBS, SOCIETIES & CHARITIES

Speakers, outings, shows, plant market etc. Anyone with an interest in plants is welcome to join. Discounts on purchases for gardening items available to members.

NEIGHBOURHOOD WATCH

CONTACTS: Jean Dellow (Chief Co-ordinator) 01424 870223, Pauline Glew (Treasurer) 01424 870258, Sally Martin (Secretary) 01424 870353, Reg Glew (Member) 01424 870258, Ralph Dellow (Member) 01424 870223.

Sedlescombe Neighbourhood Watch:

- Offers home security advice and will fit security equipment if needed. This offer is free of charge but is subject to availability of funds.
 - Loans an engraving appliance free of charge.
 - Will pay the installation charge and first month's rent for Lifeline for Sedlescombe residents.
 - Local e-mail system in operation.
-



PESTALOZZI INTERNATIONAL VILLAGE TRUST

Our mission is to make a real and lasting difference by applying the Pestalozzi principles of Head, Heart and Hands. Our unique two year scholarship programme in the UK offers academically bright but economically disadvantaged 16-19 year olds from around the world the chance to realise their potential. Our selection process carefully identifies motivated young people who have demonstrated the desire to help their home communities but have limited educational opportunities in their home countries.

Our students live in a multi-cultural, multi-faith community in Sedlescombe, East Sussex, and study for the International Baccalaureate Diploma at Sussex Coast College Hastings. Our scholarship programme allows young people who would otherwise not be afforded the chance to develop their potential and go on to make a difference in the world.

We offer a variety of opportunities to meet our students and get involved with the charity, including cultural events, fundraising activities, volunteer tutoring, and becoming a host family. Our students also volunteer at local care homes and schools, sharing their cultures and stories with the community.

Pestalozzi is located in the heart of the High Weald AONB and our estate is used by our students and other organisations for education and recreation. We offer meeting rooms, training facilities, catering and grounds hire. The income generated from venue hire helps support Pestalozzi student scholarships.

ORGANISATIONS, CLUBS, SOCIETIES & CHARITIES

For information about the charity, including our latest news, forthcoming events and more about our students, visit www.pestalozzi.org.uk, email office@pestalozzi.org.uk or call 01424 870444.

SEDLSCOMBE PLAYERS



CONTACT: Tara Buchanan (Chairman) 01424 870694.

www.sedlescombeplayers.co.uk

Subscription : £5 p.a.

The Players are a very friendly group with an enthusiastic membership of all ages. We rehearse on Monday nights in the village hall and aim to put on two productions a year, which vary from farce and straight plays to musicals and pantomime. If you are interested

in joining us - either onstage or backstage - we would be delighted to hear from you.

PRIMARY SCHOOL - Sedlescombe C E Primary School

WHERE: Gammons Way, Sedlescombe, Battle, East Sussex, TN33 0RQ

CONTACT: Headteacher: Mrs Marian Ham 01424 870585

E: head@sedlescombecep.e-sussex.sch.uk. W: www.sedlescombecep.e-sussex.sch.uk.



There are 210 children on roll, aged 4-11 years. The school has seven classes and is built in a beautiful, peaceful location within the Village. We have strong links with our local parish church and village community. All staff firmly believe in, and work hard to achieve, the vision: ***Every child matters ~ Together we enjoy learning ~ Together we achieve ~ Together we succeed.*** We believe in the whole development of every child. We have high standards and are particularly noted for our music, sport and art achievements, and for our forward thinking

developments in creative learning. Our standards in reading are particularly high. We are very proud of our reading, writing and maths end of year results for 2012 which are well above East Sussex expectations, and also the National expectations for all primary schools.

We welcome parent/carer helpers and helpers from the local community. Our school assemblies on Mondays (10.15am) and Fridays (9.15am) are open to families and the village community. We are an active, exciting, hard-working school with bright, stimulating learning environments, and with a warm, caring Christian ethos.

We offer a wide range of after-school clubs, which allow our children to develop a broad range of talents. These clubs include choir, netball, football, ICT, sewing, Zumba dancing, film club, recorder, guitar, violin, keyboard, flute, street dancing, tennis, gardening and

ORGANISATIONS, CLUBS, SOCIETIES & CHARITIES

others depending on the time of year. We offer a daily breakfast club, opening at 8.00am, and a daily child care after-school club (called our 'Twilight Club') until 5.30pm.

Please enjoy viewing our School Learning Platform accessed from our website. This will keep you up-to-date with all school news, the school calendar, class news, school prospectus, and school celebrations, plus lots more useful information. Visits to our School are always welcomed, please telephone the school to make an appointment.

www.sedlescombecep.e-sussex.sch.uk.

ICT SUITE. The School has a high quality ICT suite for use by children of the School and the local community. Courses are available for adults of the Village. Please contact the School for further information.

SCHOOL SWIMMING POOL. The School has an outdoor, heated swimming pool. It is open from Easter to end of August, for school children and the local community. We timetable sessions for pre-school children, and adults in our Village. For further information, and to express an interest in using our pool, please contact Mrs Ham at the School. We are keen for this resource to be enjoyed by the whole village community.



SCHOOL MINIBUS. We have a 15 seater minibus for use by our school, local schools, and for the village community. For further information on using our school minibus, please contact our School Business Manager, (Mrs Hernaman) on 01424 870585.

ROTHER SENIORS' FORUM established 2006. Rother Seniors invites local people who are 50+ years to have their say about public services. The Forum speaks out on issues such as Transport, Life-long Learning & Leisure, Health & Care, Housing & Pensions, Crime & Safety. We work with Local and County Council Service Providers so that members keep abreast of, and help shape, developments that affect them. **CONTACT:** Ron Sunderland 01424 870801.

SEDLSCOMBE SOCIETIES' ASSOCIATION

CONTACT: Chairman - Mrs R Farley 01424 870533. The Association is run by an elected committee who organise the annual Summer village Fayre and Flower Show on the sportsfield. The aim of the day is to provide an enjoyable event for all villagers. All local groups are welcome to participate. The AGM takes place in October when surplus funds raised from the event are awarded to local village organisations.

SEDLSCOMBE SPORTS ASSOCIATION

An umbrella organisation that promotes sport and manages provision of facilities for sport

ORGANISATIONS, CLUBS, SOCIETIES & CHARITIES

at Sedlescombe sportsfield. The membership comes from clubs that use the sportsfield. The pavilion is available for hire for birthdays and other events.

CONTACT: Secretary: Derek Wright 01424 870035 for further information and bookings.
Chairman: Grant Burberry 01424 814386

SPRING FAYRE

The Spring Fayre committee work together to organise a fayre which is normally in late April or early May. The Fayre takes place on the Village Green and usually in the gardens of the Queen's Head. The aims are to try to maintain the traditions of village fayres and raise money for various deserving charities. Members of the committee are :- Bob Harris, Barry Bradbury, David Tildesley, Andy Limpkin, David Torrance and Ralph Dellow.

THURSDAY CLUB

WHEN: 1st Thursday in every month except August. **TIME:** 10:00 to 12:00
WHERE: Committee Room, Sedlescombe Village Hall
CONTACTS: David and Anthea Post 01424 870590. Eve Bradbury 01424 870401
Speakers on a variety of interesting topics. Meetings are open to all - refreshments included.

VILLAGE HALL HIRE

CONTACT: Mrs Jenny Mitchell 01424 870707 for information about the hall and bookings.
E-mail: jennydavidmitchell@hotmail.co.uk. Secretary: Reg Glew, 01424 870258.
Established originally in 1920 and completely rebuilt in 2001, this superb facility is available for hire. The hall has a fully-equipped stage and two committee rooms. Excellent kitchen facilities and car parking are also available.

WOMEN'S INSTITUTE - SEDLESCOMBE GREEN (EVENING) established 1975

WHEN: 4th Wednesday in month. **TIME:** 7.30pm
WHERE: Sedlescombe Village Hall
CONTACT: Mrs Andrea Hogwood, 15 East View Terrace, Sedlescombe 01424 871625
We are a friendly group meeting monthly with a speaker, craft class or some other enjoyable activity. We join in County Events and take part in Group activities and meetings. In addition, we supply tea to visiting Groups.

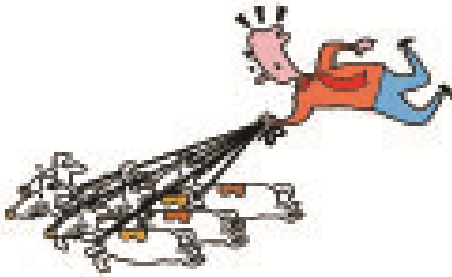
SEDLESCOMBE YOUTH GROUP

WHEN: Wednesdays. **TIME** 5-8pm
WHERE: Sports pavilion, Sedlescombe Sportsfield
CONTACT: Matt Davey on 07891 524500
The Sedlescombe Youth Group meets on Wednesdays at the Sports Pavilion. The group is for young people of 10 years old and above. **CHARGE:** 50p per session. New members very welcome.

MISCELLANEOUS INFORMATION

ALLOTMENTS. Private allotments at rear of Bulmer Lodge, The Green

CONTACT: Diane Streeter 01424 870836

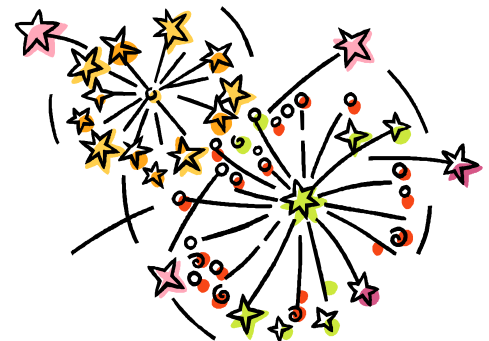


DOGS. In accordance with "**No Dogs**" control orders issued by Rother District Council, dogs are not allowed in the play areas at the Riverside, both play areas at East View Terrace or in Red Barn Field Nature Park. There are also "Clean it up" orders affecting The Village Green, Sedlescombe Sportsfield, The Riverside Playing Field, Brede Lane Car Park and all roads, pavements, grass verges and some public footpaths.

In Sedlescombe Sportsfield, there is a "**Dogs on Leads**" Control Order. The Sportsfield is NOT a public field and dog walkers **MUST KEEP TO THE PUBLIC FOOTPATH** which roughly follows the river and **MUST KEEP THEIR DOGS ON LEADS AT ALL TIMES**. The penalty for not complying with any orders is a fixed penalty fine which can be imposed by Police Community Support Officers. Certain people with disabilities are exempt.

FIREWORKS. Retailers selling fireworks all year round must apply for a licence. It is an offence:

- To let off fireworks in a public place or alter them without a licence from HSE.
- For anyone under 18 to possess adult fireworks in public.
- To let off any fireworks between 23:00 and 07:00 apart from on New Year's Eve, Chinese New Year, Diwali when displays can continue until 01:00. On 5 November, fireworks can be let off until midnight.



FOOTPATHS & BRIDLEWAYS. East Sussex County Council is the authority responsible for maintenance of public rights of way. However, a lot of practical work has been carried out in Sedlescombe by volunteers keen to improve public access to the countryside, including replacing a number of stiles with hand gates.

A map of public rights of way covering the whole county can now be seen on the [East Sussex County Council webpage](#).

MISCELLANEOUS INFORMATION

FIRE

Community Fire Safety Advice. Free Home Safety Visits can be arranged by East Sussex Fire & Rescue Services for domestic properties. Freephone 0800 177 7069.

Business Fire Safety Advice. ESRFS Staff at various locations across the county are able to provide guidance to ensure that your business complies with the requirements of the Fire Safety Regulations. Telephone 01323 462 133.

LIBRARIES

Sedlescombe Village Library - established 1953

WHEN: Tuesdays **TIME:** 13:30 to 14:30

WHERE: Village Hall Committee Room 2, side entrance. **CONTACT:** Mrs S Bonney, Highfield Cottage, Church Hill, Sedlescombe 01424 870517. A small village library run by volunteers.



Battle Library, 7 Market Square, Battle TN33 0XB (opposite the Fire Station) 0345 60 80 196

WHEN: Tuesday (09:30-18:30), Wednesday (09:30-17:00), Thursday (10:00-17:00), Friday (09:30-18:30), Saturday (09:30-17:00)

WHAT'S AVAILABLE: Free books for loan and reference, audiobooks for hire, DVDs for hire, local history material, free internet and computer access, free energy-saving monitors, Rhymetime every Tuesday 10:30 to 11:00, photocopier, bus passes for older and disabled people, bus travel discounts for young people, Connexions 360, carers discount card.

Mobile Library stops as Sedlescombe (Mobile Library 2 based at Bexhill)

WHEN: Alternate Thursdays **TIME:** 10:50-11:25

WHERE: Park Shaw, Sedlescombe

CONTACT: 0345 60 80 196. Books for adults and children, DVDs, audiobooks, reference materials and energy monitors. There is a wheelchair lift. They also deliver some services for people with disabilities.

Ebooks are electronic versions of printed books, available in either Adobe pdf or Adobe epub format. You can read them on your computer or a portable device such as Sony Reader, Kobo eReader or compatible mobile phone such as Android, Blackberry, or iPhone (but not Kindle).

Reference books. The Library Service subscribes to lots of information websites, including newspapers, reference books and family history sites such as Ancestry and Find My Past - which you can use free of charge.

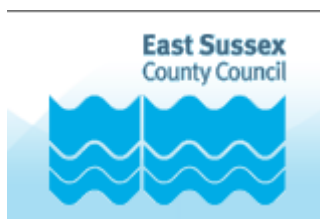
Check out the East Sussex County Council webpage - there's lots more!

MISCELLANEOUS INFORMATION



LIONS CLUB - BATTLE AND VILLAGES. Lions Clubs are an international network of men and women who work together to answer the needs that challenge communities across the world - the largest voluntary service organisation in the world. Battle and Villages Lions Club serves the area of Battle, Ashburnham, Catsfield, Etchingham, Hurst Green, Robertsbridge and Sedlescombe. The running costs of Battle & Villages Lions Club, like those of all other Lions Clubs, are met by subscriptions paid by the members, so all monies raised from the public are used for charitable purposes.

LOCAL AUTHORITIES



East Sussex County Council, County Hall, Lewes BN7 1UE 0345 60 80 190. 08:00 to 17:00.

County Councillor Peter Jones (elections May 2013) 01424 753693
crr.peter.jones@eastsussex.gov.uk. Cllr Jones is Leader of the County Council and Chairman of the Cabinet.



Rother District Council, Town Hall, Bexhill on Sea TN39 3JX 01424 787000 www.rother.gov.uk. District Councillor Tony Ganly 01580 830704 crr.tony.ganly@rother.gov.uk. Cllr Ganly is a member of the Cabinet and on the District Council's Planning Committee

NEWS

Sedlescombe News is a weekly news-sheet produced by a small team of volunteers and is available, price 20p, from Sedlescombe Stores on Fridays. Leave items for inclusion in the Stores by 12 noon on Wednesdays. Entries are FREE. The existing editorial volunteer team is always on the lookout for additional helpers. Contact 870258 if you are interested in joining the team.

Noticeboard. Items for posting on the Parish Council board outside the shop may be left in Sedlescombe Stores or, alternatively, delivered to the Clerk, Woodland Cottage, Chapel Hill.

Village Voice column in Battle Observer. The Village has its own village voice column published in the Battle Observer on sale locally every Friday. It provides information on Sedlescombe, local events, groups and organisations. There is no charge for this promotion. If you have an event coming up in the local area or would like to have a small piece outlining your club or organisation aims, activities, membership etc, then please drop your information into Asselton House, send via e-mail to judy@asselton.co.uk or call 870344.

MISCELLANEOUS INFORMATION

POLICE and other agencies trying to beat crime and anti-social behaviour

Emergencies - Call 999 if:

- A crime is being committed now
- The offender is still there or nearby
- People are injured or in danger

Non-emergencies

- You can report a crime or incident online through the Sussex Police website
- E-mail the contactcentre@sussex.pnn.police.uk
- Telephone 101 from within the UK (calls cost a flat rate of 15p/call)
- Telephone from outside the UK 0044 1273 475432

Notify the Police of a forthcoming event by completing an online form.



Police Community Support Officer (PCSO) - Demetrius (Demi) Georghiou, mobile 07788 565 576. E: demetrius.georghiou@sussex.pnn.police.uk

Demi is usually present at the beginning of Sedlescombe Parish full Council meetings. He plans to be at the Annual Sedlescombe Parish Meeting on 30/04/13.

Battle Police Station, North Trade Road, Battle TN33 0EX, open Monday to Friday 10:00 to 14:00. The nearest major Police Station is at **Bohemia Road, Hastings** and is open from 09:00 to 20:00 Monday to Saturday (closed bank holidays).

Crimestoppers is an independent charity working to fight crime. Call Crimestoppers anonymously to report any type of crime. 0800 555 111.

Victim support is a national charity giving free and confidential help to victims of crime, witnesses, their family, friends and anyone else affected across England and Wales. Victim Support is not a government agency or part of the police. Call 0845 30 30 900. Volunteers outnumber staff in Victim Support by nearly four to one. They always need new volunteers in every community.

PUBLIC TRANSPORT serving Sedlescombe. Contact 0345 60 80 194



SERVICE 349 (Stagecoach in Hastings 08702 433711) - Hastings to Hawkhurst via Sedlescombe-Staplecross. Monday to Saturdays, 2-hourly daytime. Some summer Sunday bus services.

B67 COMMUNITY BUS. 1 return journey Sedlescombe to Battle on Tuesdays and Fridays. Also special trips.

B75 COMMUNITY BUS. 1 return journey from Sedlescombe to Sainsbury on Wednesdays.

MISCELLANEOUS INFORMATION

RUBBISH AND RECYCLING

Rother District Council is responsible for this area's recycling services. Bins need to be put out by 07:00 on the day of collection at the approved collection point. Side waste is not collected and all lids must be firmly shut.

Black wheelie bin is for rubbish that can't be recycled. Food Waste. Plastics that can't be recycled, nappies.

Green wheelie bin is for flowers, grass cuttings, bark, hedge prunings, twigs, leaves, garden windfalls, plants, real Christmas Trees and CARDBOARD (flattened).

Black box/red bag. Plastic - bottles only. Steel and aluminium cans. Empty aerosols. Small pieces of cardboard.

Green box/blue bag. Newspapers. Magazines. Yellow Pages. All "white fibre" paper. Small amounts of shredded paper - please wrap in newspaper. Small amounts of greetings cards (no glitter or foil) and wrapping paper (not plastic).

MOUNTFIELD HOUSEHOLD WASTE RECYCLING SITE. On London Road (A2100), between Battle and John's Cross TN32 5LX. No commercial vehicles.

WHEN including Bank Holidays:

April to end September - Monday to Sunday 0900 to 1800.

October to end March - Monday to Saturday 0800 to 1600, Sunday 0900 to 1600.

Christmas Eve and New Year's Eve - closed at 1300.



WHAT: aluminium foil, aerosols, bric-a-brac, car batteries, cans/tins, cardboard, cooking oil, electrical goods, engine oil, fluorescent tubes/energy saving bulbs, furniture, fridges and freezers, glass bottles/jars, green garden waste including Christmas trees, hardcore/rubble, household batteries, metal items, mobile phones, newspapers/magazines, junk mail, white telephone directories, plastic bottles, soil, textiles, shoes, timber/wood, TVs/computer monitors, yellow pages. NO bonded asbestos (try Pebsham Household Waste Recycling), plasterboard, trade/business waste, tyres.

Sedlescombe Parish Council is pleased to submit its 2012/2013 Annual Report

SPORTSFIELD PARKING. Shortage of parking has been an ongoing problem for sportspeople using the field. It is, therefore, very good news that the parking area has been doubled in size mainly thanks to funding from the Sedlescombe Rangers Football Club which together with a Parish Council contribution reached the nearly £9,000 that was required. In accordance with the Planning conditions for the new car park, before the work started, the Parish Council arranged for members of the Independent Historical Research Group to sink boreholes on the Sportsfield to check whether there is any evidence of the Sedlescombe Roman wharf which is thought to exist somewhere in the vicinity.

Unfortunately, or maybe fortunately for the car park, nothing was located this time. There is of course very good evidence of a Roman ironworking slag heap not far uphill from the site. The Group have continued their work on land on and around the Pestalozzi Estate and we look forward with interest to hearing of their discoveries, maybe later this year.

TENNIS COURTS TO MULTI-USE GAMES AREA (MUGA). The Parish Council has agreed to undertake work at the tennis courts to turn them into an area suitable for tennis, netball and football. A new substantial sports fence has been put up by D&B Fencing of Cripps Corner and it is hoped that the new surface will be laid in the spring. The Parish Council is grateful for 50% funding from the Rother District Community Projects Fund and generous donations from the Mrs A Lacy-Tate Trust, Sussex County Playing Fields Association and a local resident. Plans to include a new junior football pitch as well as outdoor adult gym equipment have had to be shelved for the time being because of funding constraints. Although we came very close, our application for lottery funding did not succeed. Consequently, the Parish Council took out a small £9,000 loan which will be repaid over 10 years at about £1,000 a year. We are sometimes asked about the area being used for informal football and dog training. Yes, this is to be a Multi-Use Games Area and it will therefore be suitable for these uses as well as for tennis and netball. Please encourage everyone to enjoy and respect the space.

PLANTERS ON THE VILLAGE GREEN. The Parish Council is grateful to Mark Winchester of Blackbrooks Garden Centre for sponsoring six flower tubs on the Green and thank you to Valerie Wright for stepping in and sorting them out at the end of the summer season. Sedlescombe Garden Society has offered to help with maintaining them in the future. Although the tubs discourage some people from parking on or driving over The Green, some drivers do not seem to care. After a parish councillor saw a contractor's vehicle causing deep ruts on one edge, the Council contacted the company and they have agreed to carry out remedial work promised in the spring.

GROUNDS MAINTENANCE. In the autumn of 2012, the Parish Council carried out a detailed review of all aspects of the grounds maintenance in the parish. This has resulted in some of the work, such as the application of herbicide, being removed from the schedule. Instead volunteers and/or the Probation Service's Community Payback Team will do some hand-

2012-13 SEDLESCOMBE PARISH COUNCIL ANNUAL REPORT

weeding. Details about our Volunteer Scheme are on the back cover. Several parish councillors are already involved and their assistance is much appreciated. A contractor, Leisure Services of Marley Lane, Sedlescombe, has been appointed to undertake mowing and some litter collection in 2013.

PROPOSED FLAGPOLE FOR VILLAGE GREEN. The Sedlescombe Branch of the Royal British Legion's idea of a flagpole flying flags all the time on the Green had been approved in principle by the Parish Council. The Branch managed to find sufficient people to pay for the pole, flags and installation, Pumphouse Designs did not charge for drawing up the plans and the Parish Council paid the planning application fee. However, it was not until the plans were available showing the proposed position of the pole just north of the Pumphouse, that near neighbours realised how close they would be to the flag and the flapping noise that it would inevitably create. Other comments referring to legal issues for village greens were also made which will have to be considered by the Parish Council.

WOODEN FINGERPOSTS. East Sussex County Council is finding that the cost of maintaining the wooden fingerposts that are part of rural lanes in this part of the world cannot be supported because other modern signage is available at a quarter of the cost. Sedlescombe has three fingerposts in the parish and, although not committed to any expenditure yet, the Parish Council has agreed that these fingerposts should be retained if at all possible.

ROAD MAINTENANCE. Maintenance of the A21 trunk road is the responsibility of the Highways Agency and, for the most part, the road surface is satisfactory. Other roads in the parish are maintained by East Sussex County Council and weather conditions, together with poor maintenance in the past, have resulted in nasty deep potholes appearing unexpectedly at the edge and even in the middle of the carriageway. Since East Sussex County Council's introduction last year of a new system for tackling these problems, delays in repairing the potholes have stretched up to six months by which time many have become downright dangerous. The Parish Council has been pressing for improvements to the reporting system and for all the potholes to be dealt with in an area at the same time, rather than just the ones that are deepest. Please keep reporting road surface problems to East Sussex County Council through their website and the Parish Council will continue to lobby for an improved service.

PROPOSED BUS STOP. The Parish Council would have liked to see a proper bus stop just north of the Clockhouse Hair & Beauty Salon but unfortunately the cost is too high. Cllr Glew has got approval for a designated stop instead, where bus drivers will be told they should stop on request for people to get off. Passengers will still need to catch the bus from the bus shelter at the bottom of The Green. Generally, bus companies are now very reluctant to allow people to get off a bus on request because the driver cannot be sure that the ground surface is safe and that there are no trip hazards which could result in an accident.

2012-13 SEDLESCOMBE PARISH COUNCIL ANNUAL REPORT

STREET FARM. In last year's report, the Parish Council announced its opposition to the Keeling brothers' intention to build on land between Street Farm and Blacklands in Brede Lane. Consultants working on behalf of the Keelings held an exhibition in the Village Hall in September 2012, where an even bigger scheme than originally proposed was shown. Although there could be advantages for the School and Pre-School, who might be able to have new buildings that they both desperately want, local residents were not in favour. Subsequently, a very well attended parish meeting in the hall at the end of November 2012 voted unanimously against any development of this land.

TRAFFIC & PARKING. A small group under the leadership of Cllr Eldridge has been studying our traffic and parking problems in the Village for the last few months. As part of the study the Parish Council paid for a traffic count for a week in Brede Lane in September. An average of 2,000 vehicle movements each weekday was recorded. On the face of it, this seems an astonishing number of movements but, what is more surprising is that East Sussex County Council considers this result to show that Brede Lane is currently "lightly trafficked". Of course, as we know, many of these vehicles arrive and depart at Schooltime causing considerable congestion at these times when it is less busy at others.

According to national calculations, a house produces between six and eleven traffic movements a day, at the higher end in rural areas. East Sussex County Council works on the premise that new development should be restricted so that a maximum 10% increase in traffic movements can be expected from a development. You can calculate how many vehicle movements could be produced if the proposed number of homes, school buildings and work places were to be built in Brede Lane.

Several residents have become involved with an initiative in the Rother area to educate drivers into travelling slower through villages. Called Community Speedwatch, it trains people to use speed guns and speed indicator devices and to record the results on a computer database for the Police's attention. More volunteers are needed. See back page.

Several parish councillors involved with the Traffic & Parking Advisory Group have this year arranged a poster competition for every class, apart from Reception, in the School. The Parish Council provided vouchers which were presented to the winners by Councillors Pauline Glew and Rod Eldridge at a School Assembly. Hopefully, this competition will raise awareness for the children and their parents about the considerable traffic and parking problems in Sedlescombe. Some of the entries have been displayed in the Village Hall and can be seen at the Assembly on 30/04/13.

EX-CAR LOT. The Parish Council has received representations from local residents, including at last year's Annual parish meeting, suggesting that it should offer to purchase the ex-car lot, but after careful consideration, a meeting of the Council agreed that it should take no further action at present. The land would probably only be useful to the Council for parking a very few cars, possibly about 16 and additional money would be needed, apart

2012-13 SEDLESCOMBE PARISH COUNCIL ANNUAL REPORT

from the land cost, to bring it up to standard and to mark out the places and turning areas. Because of the high cost of the land, the Parish Council does not consider it would be a reasonable use of Council Taxpayers' money. It is not expected that housing would be allowed on the site as similar applications have been refused three times, the last in 2000, because of the small size of the plot and its position in the flood plain.

Efforts by local people to buy the land themselves, have not so far raised sufficient funds. Currently, the land only has planning permission to sell cars.

WORKING WITH OTHER VILLAGE BODIES. The Parish Council has been pleased to have both Marian Ham (headteacher at Sedlescombe School) and Sue Walton (Chief Executive at Pestalozzi International Village) giving updates at the start of our Parish Council meetings. Their contributions are interesting and provide a useful link with the Council. Demi, our PCSO, is also a regular attendee. All meetings of the full Council and of its committees are open to local residents and we welcome allcomers.

SUPERFAST BROADBAND. East Sussex County Council reports as follows:

- We need to continue showing telecom providers just how much East Sussex needs this technology so we're asking as many people as possible to complete our survey at www.goesussex.co.uk. It is very important as the more people that register interest in their area, the better chance the County Council has of attracting Telecom providers to invest in providing the expensive infrastructure required.
- The County Council will receive a grant of £10.6 million which will be added to our investment of £15 million, giving a total of almost £26 million to support the rollout of Superfast Broadband in the county.
- We aim to provide Superfast Broadband (24 Mbps and over) to 90% of the county by 2015, whilst ensuring everyone in East Sussex can access the minimum level of service of 2 Mbps.

Sedlescombe Parish Council took the lead and was the first Rother parish to set up on the earlier Rural Broadband Partnership (RBP) website. Well over 200 people living here registered their interest without obligation.

The County Council Broadband Engagement Strategy Manager wrote to the Parish Council - ***"Support from Sedlescombe has been fantastic and we are very grateful to be able to include this as part of our procurement process"***. Please keep up the good work!

NEIGHBOURHOOD PLANNING. In 2011, the Government announced its intention to allow parish councils to do their own Neighbourhood Plans. Although Neighbourhood Plans cannot be used to stop development, they can show where development in a Village would be acceptable to the majority of the public. Although the major part of the work in drawing up the Plan would have to be undertaken by the Parish Council, the District Council would

2012-13 SEDLESCOMBE PARISH COUNCIL ANNUAL REPORT

also have to be involved as would many people living in the parish. Consultation would take the form of not only questionnaires but also exhibitions and workshops.

All parishes in Rother District Council have been allocated a number of houses which are to be built between 2011 and 2028. Sedlescombe's housing development number has been set at 25. Eight "affordable houses", ie social housing or shared ownership homes are being built at East View Terrace by AmicusHorizon. This leaves space to be found for 17 additional properties in or near Sedlescombe's development boundary in blocks taking 6 properties or more each. On 18/02/13, the Parish Council unanimously agreed to go ahead with a Neighbourhood Plan for Sedlescombe (SNP). This will require identification of these development sites.

Parish councillors have been liaising with Slaugham Parish Council in West Sussex who are about a year further down the Neighbourhood Plan route and are very grateful for advice and assistance received from the Chair and Clerk.

OTHER EXPECTED HOUSING DEVELOPMENT UP TO 2028. According to Rother's Core Strategy document, 14 properties were completed in Sedlescombe in the five years between 2006 and 2011. Also, planning permission has already been given for 28 further properties, some of which are now being built on the Pestalozzi Estate.

In addition, smaller blocks of development are expected to come up between now and 2028 which are within the Sedlescombe development boundary (either the boundary we have now or an adjusted one) and will be allowed. These sites are usually known as "windfall sites".

SUMMARY OF SEDLESCOMBE PROPOSED HOUSING DEVELOPMENT

Housing completions 2006-2011	14
Housing commitments (ie permission granted) up to 2013	28
New commitments 2011-2028	25
TOTAL expected completions 2006-2028	67



Annual report – Councillor Tony Ganly.

Sedlescombe Annual Parish Assembly 30 April 2013.

*The funding climate remains extremely challenging. The Government grant to the Council has been cut by around 30 per cent over the last two years and with further cuts in grant coming over the next two years Rother will need to find an additional £1.5 million of savings.

* This is on top of the almost £2million of savings found in the last two years through a range of measures; these include shedding over 30 staff, selling buildings and sharing office space, investing in new technology to help us work more efficiently, devolving some services and working jointly with other councils and partners.

*To give some perspective on how efficient the Rother is; we have the lowest Council Tax in East Sussex (which looks set to remain frozen), one of the lowest staffing levels of any authority in the country and we deliver over 60 services.

*It is likely any further savings will now have an impact on those services either through changing the way they are delivered and who delivers them, or by seeing some reduction in service or in the quality of service. Councillors face some very difficult choices around further staff losses and which services could see a reduction in funding.

*We recently signed a Joint Waste Contract with Hastings, Eastbourne and Wealden Councils. This will provide the authorities with a common waste contractor and save all parties a combined £30 million over the next ten years. It will not come into effect in Rother until 2014 and more information will be provided to residents nearer the time. The new contract will actually enhance the amount of recycling that can be done and will make the process much more straightforward for residents.

*Rother and Wealden now have shared services for legal, audit and environmental health. These bring significant savings, but residents and businesses will not notice any changes to the services they receive

*Another example of joint working is the new grounds maintenance contract between Rother, Hastings Borough Council and Amicus Horizon. This will bring estimated savings of £200,000p.a.for Rother over the duration of the contract.

*Despite the financial climate, Rother continues to run its Community Grant Scheme which gives funding to community projects and good causes, especially in the rural areas. Recent grants have gone to Sedlescombe recreation ground and Rye's clock tower project.

*We remain a key player in the regeneration of the district and have supported East Sussex County Council with their construction of the Bexhill to Hastings Link Road. This will have

wider economic benefits for the district, as the road will provide an estimated 1,500 new homes and 50,000 sq m of business space.

*Despite the financial climate, our services continue to perform strongly:

Housing Benefit and Council Tax benefit claims are processed faster this year than last year. On average, a new claim has a decision in less than 20 calendar days, shaving 2 days off last year's processing speed. A prompt decision for vulnerable families means fewer problems with landlords and debt.

The speed of processing planning applications for the average householder has held steady compared to last year, despite staffing and resource pressures. It takes, on average, 8 weeks to get a decision for an ordinary planning application and that meets the national guidelines.

Anyone buying food in Rother, at shops or in cafes and restaurants, will be pleased to learn that 86% of local food businesses are rated as 'good' or higher by our Food Hygiene Team.

28 empty homes in Rother have been brought back into use due to the work of the Council, so far this year. By the end of March this figure will exceed last year's. It includes homes in Bexhill and Northiam, Battle, Fairlight, Guestling, Camber, Hurst Green, Winchelsea and Rye Harbour.

We have prevented twice the number of households from becoming homeless than we did in the previous year. This is because we've had more families coming to us for help and we've had more schemes available to help them, particularly with putting families with private sector landlords.

TONY GANLY has been the Rother District Councillor for the Ward of Ewhurst and Sedlescombe since May 2007. His current committee membership is as follows:

- Cabinet Member 2010-Present. Spokesperson on Recycling and Waste, Rural Affairs and Parish and Town Council Liaison.
- Joint Waste Committee
- Planning Committee

In addition, he is the Rother District Council representative on the following:

- 1066 Enterprise Board
- Battle Area Sports Centre Management Committee
- East Sussex Waste Portfolio Holders Group
- Romney Marshes Area Internal Drainage Board.

INDEX

ACCOMMODATION

- Brickwall Hotel 14
- Kester House Bed & Breakfast 12

ACCOUNTS 8-9

ADVERTISING 11-16

ALLOTMENTS 24

ARCHITECTURAL

- Pumphouse Designs 12

ASSEMBLY AGENDA 2013 inside cover

ASSEMBLY MINUTES 2012 2

BADMINTON 17

BELLRINGERS 18

BEAUTY THERAPIST -Angel Belle Beauty12

BOWLS 17

BRITISH LEGION 17

BROADBAND 1, 4, 32

BROWNIES 17

BUILDING & DECORATORS - BEM 12

BUILDERS MERCHANTS

- Chalk Down Lime 12

CAR REPAIRS

- Bridge Garage Workshop 14
- LWA Bodyshop Ltd 13
- Tivoli Auto Services 12

CHAIRMAN'S INTRODUCTION 1

CHILD CARE

- P J Childminding Services 13

CHIROPODIST - Andrea Birtwistle 13

CHURCHES

- Chapel Hill Church (URC) 17
- St John the Baptist Parish Church 18
- Friends Parish Church Heritage Trust 18
- Parish Church Bellringers 18

CLERK 7

COMMUNITY PAYBACK 29-30

COMMUNITY GRANT 35

CONSTRUCTION - Parker & Son 13

COUNCILLORS 6-7

COUNCIL TAX 8-9, 35

CRICKET 18

DANCE

- Old Time Dance Club 18

DECKING & FENCING

- John Grice 13

DISTRICT COUNCILLOR 33-35

DOGS 10

DOUBLE GLAZING

- John Grice 13

DRAINAGE

- Ecoflo Garden Irrigation Ltd 14

DRAMA 21

EAST SUSSEX COUNTY COUNCIL 26

EAST VIEW TERRACE 5,

EX-CAR LOT 5, 31-32

FENCING

- D&B Fencing 14

FINGERPOSTS 30

FIRE 25

FIREWORKS 24

FISHING 19

FLOWER CLUB 18

FOOTBALL 19

FOOT HEALTH CARE 14

FOOTPATHS & BRIDLEWAYS 24

FREE PRIZE DRAW inside cover

FRIENDSHIP CLUB 19

GARDENS

- Sedlescombe & District Garden Soc. 19

GOLF RESORT 14

GROUND MAINTENANCE - 29-30, 35

HIRE

- Chapel Hill Church (URC) 17
- Sedlescombe Village Hall 23
- Sedlescombe Pavilion 23

HOUSEBUILDING 4, 33

LIBRARIES 25

LIFT SCHEME 10

LINK ROAD 35

LIONS CLUB - BATTLE & VILLAGES 26

LITTER 10

INDEX

MEETING ROOMS & TRAINING FACILITIES

Pestalozzi 15

MUSIC - "Not Guilty" 15

MULTI-USE GAMES AREA 4, 8, 9, 10, 29

NEIGHBOURHOOD PLAN 1, 32-33

NEIGHBOURHOOD WATCH 20

NEWS

Sedlescombe News 26

Noticeboard 26

Village Voice 26

ORGANISATIONS ETC 19-23

PARISH COUNCIL ANNUAL REPORT 29-33

PARISH COUNCILLORS 6-7

PARKING 5, 31

PESTALOZZI 20-21, 32

PLAYGROUNDS

Riverside 10

East View Kickabout Area 10

PLUMBING & HEATING

Graham Daniel Ltd 15

Richard Jordan Ltd 15

POLICE 27

Crimestoppers 27

Police Community Support Officer 27

Victim Support 27

PRECEPT 9

PUBLIC TRANSPORT 27, 30

QUEEN'S DIAMOND JUBILEE 8

RECLAIMED MATERIALS

Rand Reclamation 15

RED BARN FIELD NATURE PARK 10

ROADS 30

ROTHER DISTRICT COUNCIL 26

ROTHER SENIORS 22

RUBBISH & RECYCLING 28, 35

SCHOOL

Sedlescombe CE Primary School 21, 32

ICT Suite 22

Swimming Pool 22

Minibus 22

SIGNWRITER & AUTHOR

Mrs J Chapman 16

SHOPS

Sedlescombe Antiques & Collectables 16

SHOP & POST OFFICE

Sedlescombe Village Stores Ltd 15

SKIP & GRAB HIRE 16

SOCIETIES ASSOCIATION 22

SPORTS ASSOCIATION 22-23

SPORTSFIELD 29

SPRING FAYRE 23

STREET FARM 31

STREETLANDS 5

TAXI - Sedlescombe Hire Car 16

THURSDAY CLUB 23

TREE SURGERY - EchoWood 16

VALERIE WRIGHT inside cover, 2

VILLAGE GREEN 10, 29

Proposed flagpole 30

VILLAGE HALL 23

VOLUNTEERS 1, 8

WALKING BUS 5

WASTE COLLECTION CONTRACT 35

WEBSITE 10

WOMEN'S INSTITUTE 23

YOGA 16

YOUTH GROUP 23

Business or Community advertising for the 2014 printed Directory should be sent to the Parish Council by 31/01/14.

The cost is at least £21 including VAT (free community advertising).

Standard Business Listing on the www.sedlescombe.org.uk website can be purchased for £4 including VAT (expires on 31 March each year).

IS THE "BIG SOCIETY" ALIVE AND WELL AND LIVING IN SEDLESCOMBE?

WE NEED VOLUNTEERS

In the autumn, the Parish Council was faced with a problem. Members realised there was a lot of work to be done but that, unless the Council Tax was to go through the roof, they would have to find a way to get it done for free! Residents are already very generous with their time but it was suggested that maybe there are more people who would like to get involved, if only they knew how.

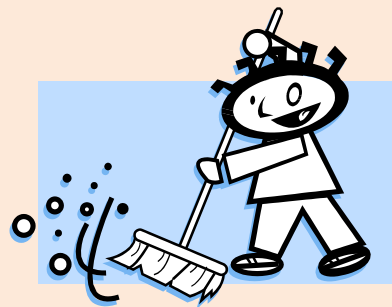
It really is very easy in Sedlescombe. Councillors have agreed to take the lead regarding some of the jobs and they will help sort out what is required. As a first point of contact, you can either e-mail (sedlescombe@freezone.co.uk) or phone 01424 870508 Pauline Raymond, the Parish Clerk. Some jobs are "one-off" and will take a couple of hours or you may be looking for an "ongoing job".

These are the sort of jobs we want volunteers to do:

- Sweeping
- Hand weeding
- Flower tub maintenance
- Half-moon edging
- Clearance of drain covers around The Green
- Hedge cutting
- Washing play equipment
- Washing outside of dog bins
- Washing furniture
- Applying wood preserver
- Delivering parish council papers near where you live

- Driving people to the hospital for appointments under our Lift Scheme
- Training to monitor a speed gun and speed indicator device
- Co-ordinating litter collectors
- Hands-on help with stile repairs, clearance of footpaths and the like

DON'T FORGET THE
WWW.SEDLESCOMBE.ORG.UK
WEBSITE
WHERE YOU WILL FIND LOTS OF UP-TO-DATE INFORMATION



The 2013 Annual Report & Directory is published by Sedlescombe Parish Council, Woodland Cottage, Chapel Hill, Sedlescombe TN33 0QX.

E-mail: sedlescombe@freezone.co.uk

March 2013